

## Assembling E-LAM® Spliced Structures

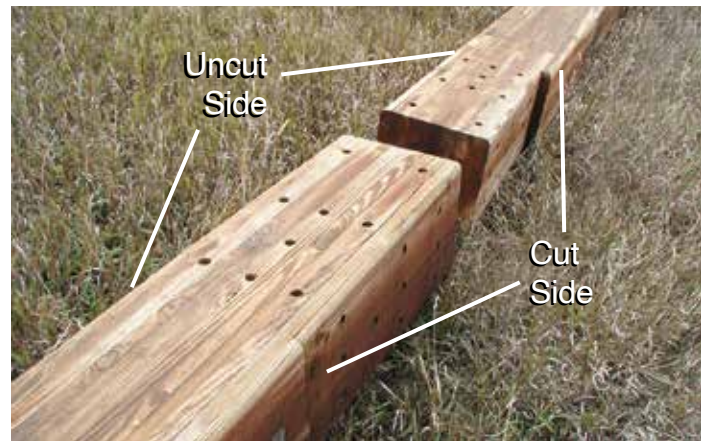
### NOTE:

Before assembling the splice, familiarize yourself with the LWS engineering drawings and also the assembly details provided in this bulletin.

The assembly instructions should be performed according to established methods for safe working practices.

### Step 1

Orient the poles so that the bottom of the upper section and the top of the lower section meet. Also make sure the cut and uncut sides are in proper alignment.



### Step 2

Locate the “1T” tag that is attached to the upper pole section. The tag is located near the pre-drilled splice holes of the upper pole section. This tag marks the proper location of the first splice plate.



### Step 3

Place the side plate marked “1T” on pole so that the “1T” stamp matches the “1T” tag on the pole. Insert several bolts to temporarily hold the splice plate in place.



## ORIENT PLATES PER ASSEMBLY DETAILS ON PAGE 4

### Step 4

Place side plate marked “3T” on pole opposite of first side plate. Hold in place loosely with bolts and nuts.



### Step 5

Place splice channels marked “2T” and “4T” on appropriate sides and loosely hold with bolts and nuts.



### Step 6

Align upper and lower pole sections as true as possible and tighten all splice bolts. Do not attach locknuts at this point since the pole sections may need to be re-aligned after setting.



### Step 7

Pick pole above the balance point marked on the lower section of the pole and set according to established safe methods.





## Step 8

Plumb lower section of the spliced pole assembly. Backfill with recommended material. Check alignment of upper pole section and adjust if needed.



## Step 9

If adjustment is needed, attach a choker sling to the upper pole section and apply a moderate amount of lift.



## Step 10

Grasp upper pole section with a pole-grab. Slightly loosen the splice bolts. Using the pole-grab, plumb the upper section in alignment with the lower section. Tighten bolts.



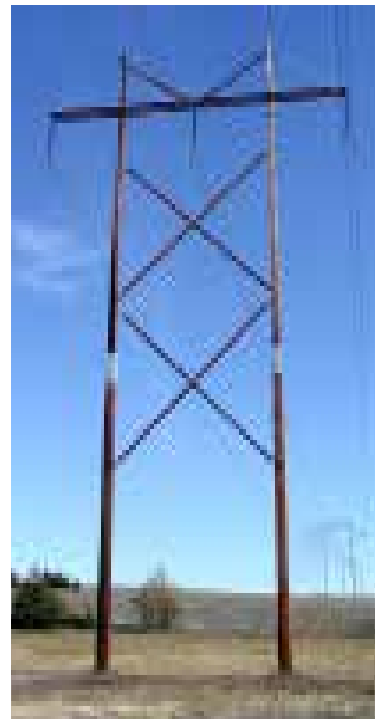
## Step 11

Re-torque all splice bolts (100 - 120 Ft-Lbs) and attach locknuts to complete the installation.

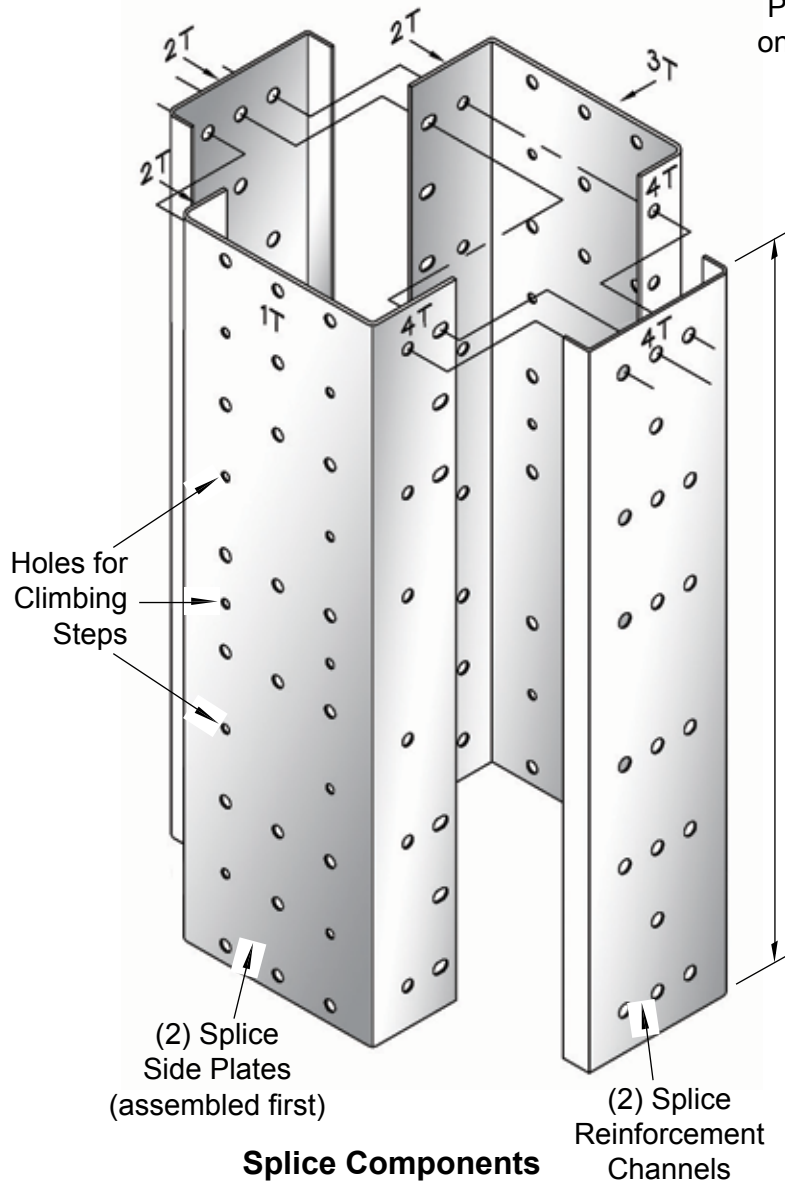


## Note:

Spliced structures may also be completely framed on the ground prior to setting. If this method is used, steps 8 thru 11 would be performed on a fully assembled structure instead of a single pole.



**Splice Plate Assembly Orientation**



Match "1T" Tag on Pole with "1T" Stamp on Back Side of Splice Plate Assembly

