



LWS

LAMINATED WOOD SYSTEMS

**INNOVATIVE
STEEL SOLUTIONS**



REMOTE ACCESS INSTALLATION



SINGLE UNIT



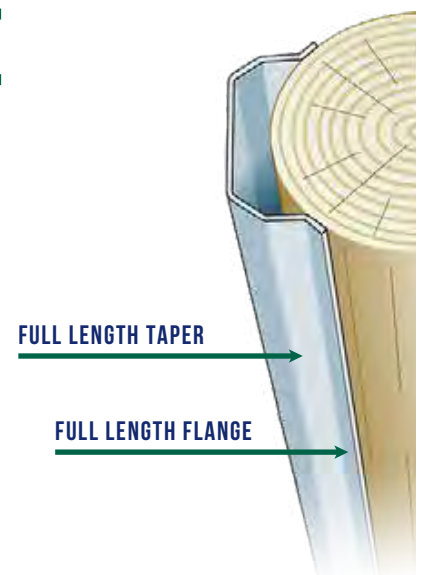
SRS® SPLICED REINFORCEMENT SYSTEM



PNEUMATIC DRIVING SYSTEM

THE PATENTED ADVANTAGE OF POLEENFORCER®

The patented features of the PoleEnforcer® makes it the strongest ground line reinforcement unit available. The PoleEnforcer® incorporates a full length flange which produces superior strength in both the transverse and longitudinal directions. The full length taper forces the unit to maintain contact with the pole butt below grade. These patented features allow the PoleEnforcer® to reinforce poles that are considered rejects, saving many thousands of dollars versus change outs. LWS offers complete tool packages for driving the units using either pneumatic, or drop weight systems.





DROP WEIGHT DRIVING SYSTEM



LIGHT DUTY UNIT



LIGHT DUTY UNIT



THIN SHELL DOUBLE UNIT

- Reinforce poles that others reject
- Little or no shell thickness required
- Use on wood, steel or concrete poles
- Excavated or eroded conditions
- Bolted or banded units

PoleEnforcer[®]
PATENT NO. 5,382,740

PoleEnforcer SRS[®]
Spliced Reinforcement System
U.S. PATENT NO. 9,777,500

RAISE ENERGIZED LINES WITH PHASERAISER®



The patented PhaseRaiser® structure lifting system allows crews to raise existing wood structures an additional 5, 10, 15 or 20 feet without taking the line out of service. Using the specialized PhaseRaiser® Tool Trailer, a crew of five qualified line workers can safely raise up to four structures per day. Tool trailers can be rented or purchased and include field support.

The average age of structures that are raise is 50+ years. If the line is good enough to be in service, it is good enough to raise and remain in service. Simply provide LWS engineers with existing voltage, loading information and desired life and they will specify the appropriate PhaseRaiser® steel units. Send your design information to engineering@lwsinc.com or visit www.lwsinc.com and click "Get a Quote."



**NO LINE
OUTAGE REQUIRED**

**LOW IMPACT
EQUIPMENT**

**FIELD TRAINING
SUPPORT**

**REINFORCE GROUND
LINE WITH TWO-
PIECE UNITS**

**1/3 THE COST OF
STRUCTURE
CHANGE OUTS**

**PERMANENT, 30+
YEAR SOLUTION**



RAISING STRUCTURE



CYLINDERS REMOVED



115KV 5FT LIFT



345KV 15FT LIFT



345KV 5FT LIFT



DRIVE LOWER UNIT

PLACE UPPER UNIT

WEATHERING STEEL PRS

BOLT UPPER UNIT

PAINTED PRS

SPliced PRS UNITS

INCREASE POLE STRENGTH BY THREE OR MORE CLASSES WITH THE PRS POLE RECLASSIFICATION SYSTEM®

Based on the patented design of the PoleEnforcer®, the PRS Pole Reclassification System® is an economical way to increase the strength and extend the life of existing poles without the cost of expensive change outs. The system consists of two steel units, one that is driven and one that is bolted or banded to the pole. The PRS units can most often be installed on energized lines by a qualified line crew, avoiding costly outages. LWS engineering staff will assist in determining the proper PRS units for each pole.

Submit your existing structure information along with the amount of increased strength required to engineering@lwsinc.com. You may also complete the online engineering form by selecting "Get A Quote" at www.lwsinc.com.

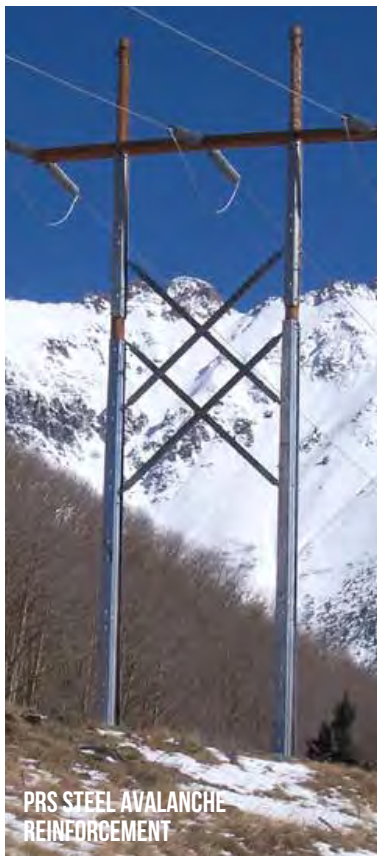


PRS ON CONCRETE POLE

INNOVATIVE SOLUTIONS FOR UNIQUE CHALLENGERS

The patented designs of the PoleEnforcer®, PhaseRaiser® and PRS systems allow them to be used in a variety of innovative configurations and applications. Creative solutions include steel foundations, car break repair, woodpecker, burned pole repair and avalanche mitigation structures.

Contact the LWS engineering department at 800-949-3526 with your unique structure repair or reinforcement needs.





EXTENSIVE TESTING AND PROVEN STRENGTH

The strength and performance of all LWS steel products have been proven through extensive full-scale testing by independent test labs. The patented design of LWS steel allows it to out perform any other reinforcement product on the market.

All LWS Steel products are proudly made in the USA from the highest grade domestic steel available and are typically shipped in 4 to 6 weeks. LWS offers a full line of specialized tools and equipment for use when installing PoleEnforcer®, PhaseRaiser® and PRS systems. Field support is also available for crews who are installing LWS steel.

Visit www.lwsinc.com or call 800-949-3526 for more information on all LWS products and to locate a sales representative in your area.

LWS

LAMINATED WOOD SYSTEMS

Founded in 1992, Laminated Wood Systems is a leader in supplying innovative products for the worldwide electric utility infrastructure. LWS reintroduced glue laminated utility structures to the industry and soon after developed its' family of steel products.

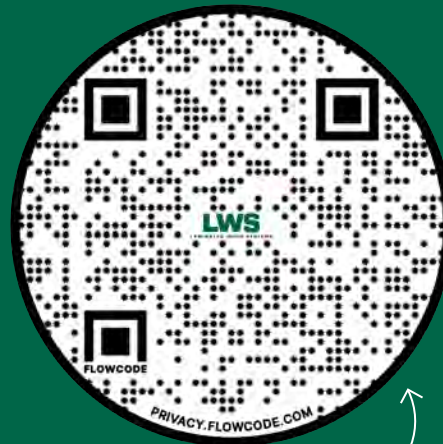
Utilizing a network of manufacturing and treating facilities located throughout the US, LWS can maintain some of the quickest delivery lead times available in the industry. Typical delivery Can be expected 6 to 8 weeks after drawing approval.

The LWS sales and engineering offices are located in Seward, Nebraska. LWS partners with nationwide independent sales agencies to move our quality products to market.

Visit www.lwsinc.com for more information on all LWS Products and to locate a sales representative in your area.



SCAN TO VIEW OUR
INSTALLATION VIDEOS



SCAN TO VIEW OUR
WEBSITE & LEARN MORE